



YOLO SUBBASIN GROUNDWATER SUSTAINABILITY PLAN OVERVIEW

WHAT IS A GROUNDWATER SUSTAINABILITY PLAN?

California's Sustainable Groundwater Management Act (SGMA), enacted in 2014, requires the formation of local Groundwater Sustainability Agencies (GSAs) to develop and implement Groundwater Sustainability Plans (GSPs). Per Water Code §10727.2, GSPs describe the characteristics of the basin and create measurable objectives to achieve the basin's sustainability goal within 20 years.

THE YOLO SUBBASIN GROUNDWATER AGENCY

To comply with SGMA, 20 local agencies and six affiliated parties in Yolo County executed a Joint Powers Agreement (JPA) to form the Yolo Subbasin Groundwater Agency (YSGA). In 2022, the YSGA adopted the Yolo Subbasin Groundwater Sustainability Plan (Yolo Subbasin GSP) to identify projects and management actions to support beneficial uses and users.

YSGA Member Agencies

City of Davis	Madison Community Service District	Reclamation District 787
City of Woodland	Reclamation District 108	Reclamation District 999
City of West Sacramento	Reclamation District 150	Reclamation District 1600
City of Winters	Reclamation District 307	Reclamation District 2035
County of Yolo	Reclamation District 537	Yocha Dehe Wintun Nation
Dunnigan Water District	Reclamation District 730	Yolo County Flood Control & Water Conservation District
Esparto Community Service District	Reclamation District 765	

YSGA Affiliated Parties

California American Water Company, Dunnigan	University of California, Davis
Colusa Drain Mutual Water Company	Environmental representative)
Private Pumper Representative – Yolo County Farm Bureau Appointed	Rumsey Water Users Association

YOLO SUBBASIN SUSTAINABILITY GOALS

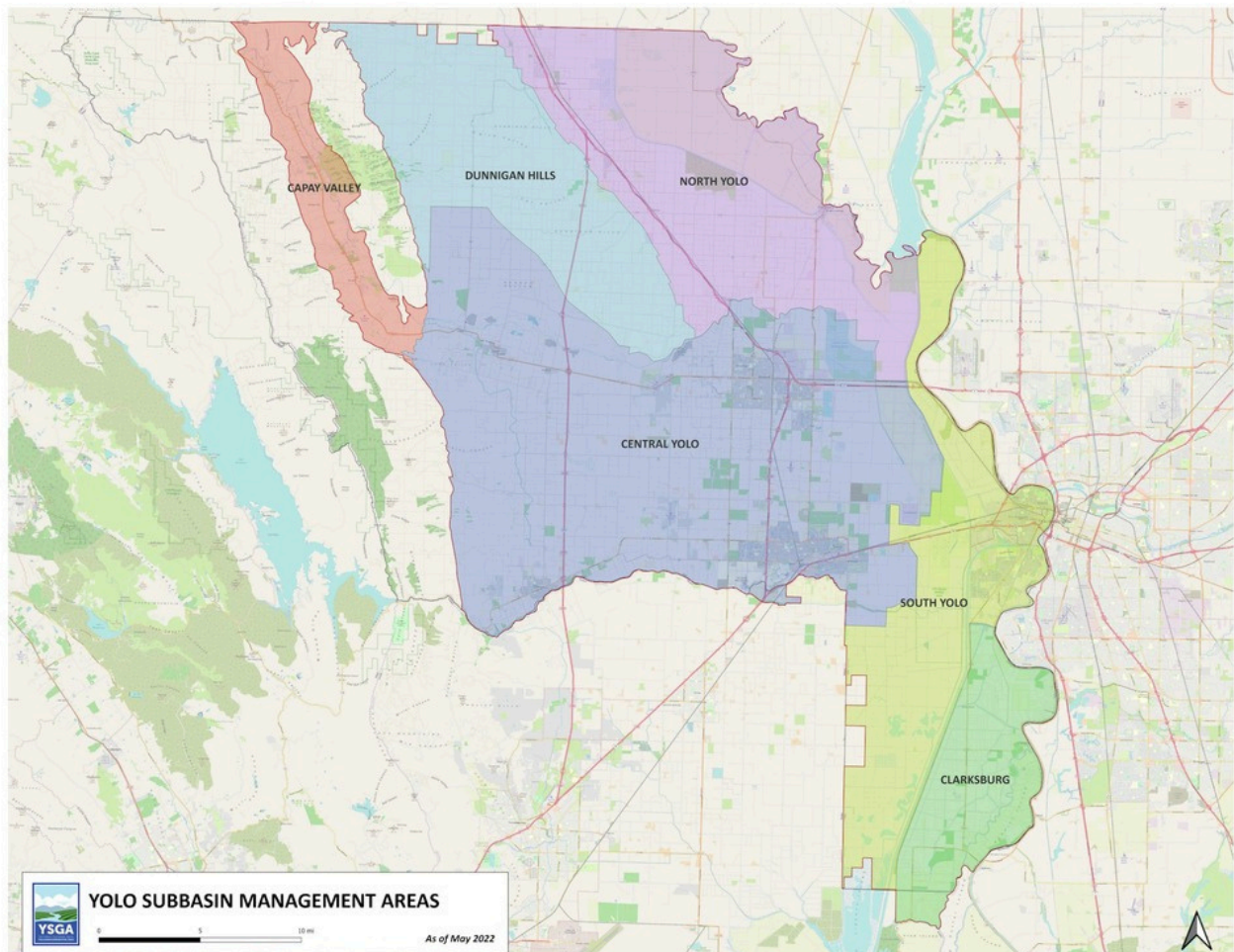
- 1** Achieve sustainable groundwater management in the Yolo Subbasin by maintaining or enhancing groundwater quality and quantity through the implementation of projects and management actions to support beneficial uses and users.
- 2** Maintain surface water flows and quality to support conjunctive use programs in the Subbasin that promote increased groundwater levels and improved water quality.
- 3** Operate within the established sustainable management criteria and maintain sustainable groundwater use through continued implementation of a monitoring and reporting program.
- 4** Maintain sustainable operations to maintain sustainability over the implementation and planning horizon.

SUSTAINABILITY INDICATORS

SGMA defines six sustainability indicators a GSA must monitor to provide quantitative data to the State:

- Chronic lowering of groundwater levels
- Reduction in groundwater storage
- Degraded water quality
- Land subsidence
- Depletion of interconnected surface water
- Seawater intrusion (not a concern in the Yolo Subbasin)

The Yolo Subbasin GSP sets minimum thresholds for each sustainability indicator at representative monitoring wells in Yolo County. To measure depletion of interconnected surface water, for example, Well #265 in Lower Cache management zone has a minimum threshold of 29.7 feet of depth to water.



MANAGEMENT AREAS

YSGA established six management areas in the Yolo Subbasin, each with unique level of groundwater use, land uses, overlying jurisdictions, and/or access to surface waters. YSGA is collaborating with local interested parties in each management area to implement unique groundwater projects and management actions for the following sustainability indicators: chronic lowering of groundwater levels, reduction in groundwater storage, degraded water quality, land subsidence, and depletion of interconnected surface water. The GSP sets minimum thresholds for each sustainability indicator, and YSGA is responsible for monitoring a network of wells in Yolo County and reporting progress to the State.